

VW-1104GW

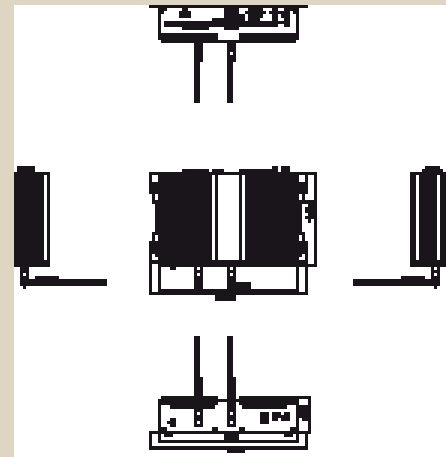
4 Channel H.264 AVC Wireless Mobile Video System



Features

- Intel Atom N270 CPU 1.6GHz
- 4-channel full D1 video encode
- H.264 AVC hardware encode
- Supports NTSC and PAL video input
- One internal 2.5" HDD bay and one CF socket
- Up to 2GB DDR2 400/533 MHz SDRAM
- 4 alarm-input and 2 relay-output
- 1 RS485, 12V/1Amp DC output
- Gigabit Ethernet
- Wireless communication via 3G and Wi-Fi

MECHANICAL DRAWING



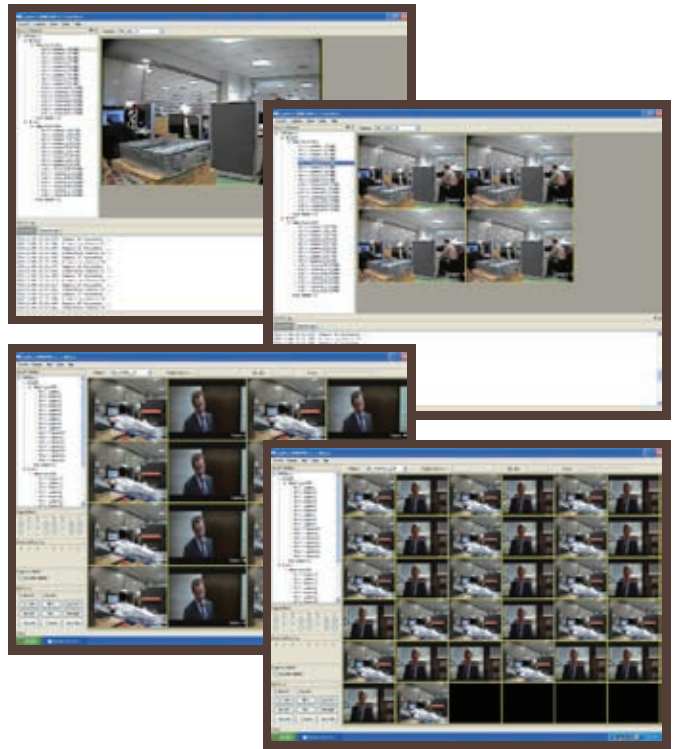
Applications

- Mobile Video System
- Intelligent Transportation System
- Industrial Surveillance
- Video Broadcasting
- Video Surveillance
- Video Analytics
- Video on Demand



FEATURE	DESCRIPTION	
Form Factor	Fanless Embedded System	
Platform	Processor	Intel Atom processor N270, 1.6GHz
	Chipset	Intel 945GSE + ICH7M
	FSB	400/533MHz FSB
	BIOS	AMI BIOS 16Mbit Flash ROM
H.264 Video	Compression	H.264/AVC
	Video Input	4 x BNC inputs CVBS 1.0Vp-p, with 75 ohm loading for video input
	Resolution	4 channel Full D1
	Frame Rate	720 x 480 NTSC, 720 x 576 PAL NTSC: 120FPS / PAL: 100FPS
Audio	Compression	1 channel G.711
Memory	Technology	DDRII 400/533 SDRAM
	Onboard	1GB DDR2 IC; Maximal 2GB
	Expansion	1 x 200-pin SO-DIMM slot, supports 256MB, 512MB, 1GB DIMM
Audio/Video Inputs	Video	4 channel video inputs via BNC connectors
	Audio	1 channel audio input via RCA connector
OS Support	Linux, Windows	
Storage	Interface	SATA x 1, CF x 1
	Bay	1 x 2.5" HDD bay
Graphics	Integrated Intel graphics core Gen 3.5	
Networking	1 GbE NIC	
Wireless	3G	HSUPA, HSDPA, WCDMA, E-GPRS and GSM
	Wi-Fi	802.11 B/G/N with 3dBi SMA antenna
	GPS	NMEA-0183 V2.2 with 3 meters SMA antenna
	BNC	4 port BNC connectors for video input
I/O Connectors	RCA	1 port RCA connector for audio input
	USB 2.0	4 ports
	Serial	2 x high speed UARTs
	VGA	D-Sub 15 pin VGA port (2048 x 1536)
	HDMI	1 HDMI port (1920 x 1080)
	LAN	1 RJ45 GbE LAN port
	Audio	Mic In, Line Out
	Alarm Relay and PTZ	One RS-485 for PTZ, 4 alarm-input and 2 relay-output
PC Health Monitoring	Temperature	Monitors CPU and chassis environment with trip sensors
LED	Power On LED (Green)	
	LAN Activity LED (Yellow)	
	HDD Activity (Yellow)	
Buttons	Power Switch	
	Reset Button	
Power	Input	2 pin Phoenix connector and DC-In jack
	Input Voltage	DC 10~36V, Min. power is 45Watt
	Output Voltage	DC 12 V / 1Amp via the terminal block
Environmental Parameters	Operating Temperature	0° to 45°C
	Storage	-20° to 75°C
	Relative Humidity	5% to 95%
Software	Application	EyeShot 2000 Control Panel (Windows XP)
	SDK	Linux, Windows
Approvals & Compliance	CE	
	FCC Class A RoHS	
Ordering Information	VW-11041	Fanless Intel Atom Embedded System with H.264 H/W codec, 4 channel video and 1 channel audio barebone
	VW-1104GW1	Fanless Intel Atom Embedded System with H.264 H/W codec, 4 channel video and 1 channel audio, GPS + 3G + WiFi communication barebone

EYESHOT 2000 CONTROL PANEL



Software Features

- Motion Detection
- Video Loss Detection
- P/T/Z control
- Night Detection
- RAW Data Preview

SDK Features

- Encode and Alarm I/O
- Streaming
- Decode and Playback
- Display (X-Window for Linux, DirectDraw for Windows)
- RS-485 Control

SDK OS Support

- Windows XP
- Linux: Ubuntu, Fedora, CentOS

About Lanner

Founded in 1986 and publicly listed (TAIEX: 6245) since 2003, Lanner Electronics Inc. is an ISO 9001 certified designer and manufacturer of reliable, frontline network security, network video and applied computing platforms. With headquarters in Taipei, Taiwan and branches in the U.S. and China, Lanner is uniquely positioned to deliver custom technical solutions with localized, value-added service.

Contact information

Lanner Electronics Inc
7F, 173, Section 2 Datong Road
Sijhih City, Taipei County 221, Taiwan

T +886 2 86926060
F +886 2 86926101
E sales@lannerinc.com
W www.lannerinc.com



Specifications subject to change without notice.

All brand names and trademarks are the registered properties of their respective owners.

Copyright 2009 Lanner Electronics Inc.

Lanner
creating value in applied computing